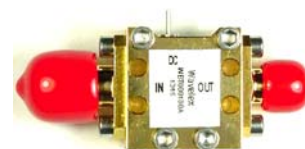


**Key Features**

- Wide band, 20 MHz ~ 18.0 GHz
- Low insertion loss, 0.50 dB typ.
- 1.22:1 VSWR
- 220 mA DC current handling
- 2 W CW power handling
- Precision machined housing
- RoHS compliant

**Applications**

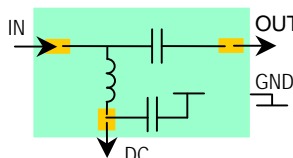
- Up to 18 GHz Band
- Satellite communications
- Broadcast
- RF bench test
- Mobile base station applications



**Absolute Maximum Ratings**

Input Power, CW	33 dBm
DC Current	220 mA
Storage Temperature	-40°C to +85°C

**Functional Block Diagram**



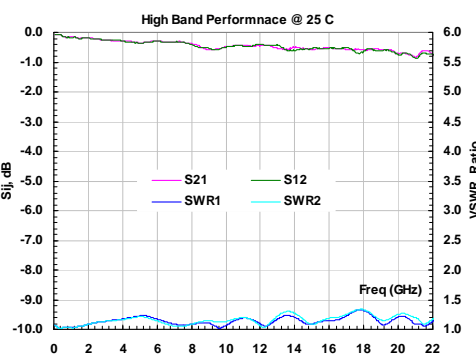
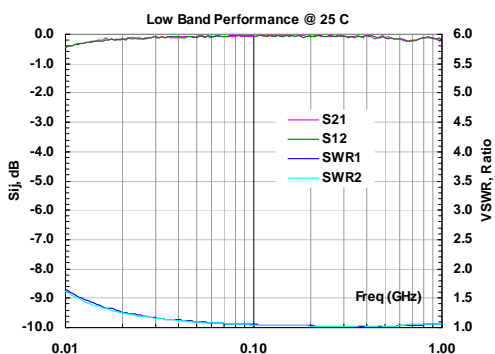
**Ordering Information**

<b>Model</b>	<b>WBT000180A</b>
--------------	-------------------

**Specifications** (Tested at +25°C)

Item	Symbol	Test Constraints	Min	Typ	Max	Unit
Frequency Range	BW	50 Ohm Impedance	0.02		18.0	GHz
Insertion Loss	S <sub>21</sub>	0.02 – 18 GHz		0.5	1.0	dB
VSWR	SWR <sub>i</sub>	0.02 – 18 GHz		1.22:1	1.5:1	Ratio
Isolation, RF to DC port		0.02 – 18 GHz		40		dB
Maximum Power Handling	P <sub>MAX</sub>	0.02 – 18 GHz, CW			33	dBm
Maximum DC Voltage	V <sub>DCMAX</sub>				16	V
Maximum DC Current	I <sub>DCMAX</sub>				220	mA
Operating Temp	T <sub>o</sub>		-40		+85	°C

**Typical Performance**



**Outline**

Units: INCH  
[mm]

