

**Key Features**

- Wide band, 15 MHz ~ 4.2 GHz
- Low insertion loss, 0.30 dB typ.
- 1.2:1 VSWR
- 600 mA DC current handling
- 20 W CW power handling
- Precision machined housing
- RoHS compliant

**Applications**

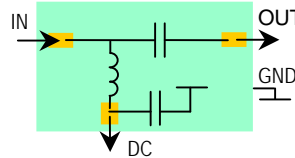
- Up to 4.2 GHz Band
- Satellite communications
- Broadcast
- RF bench test
- Mobile base station applications



**Absolute Maximum Ratings**

Input Power, CW	20 W
DC Current	600 mA
DC Voltage	50 V
Storage Temperature	-40°C to +85°C

**Functional Block Diagram**



**Ordering Information**

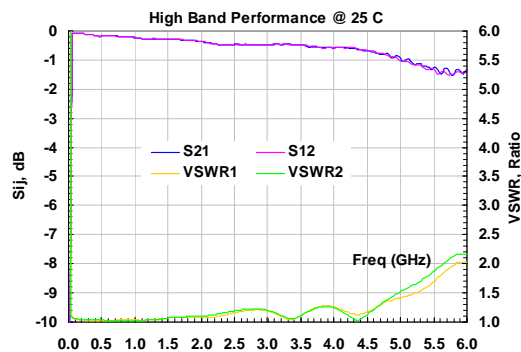
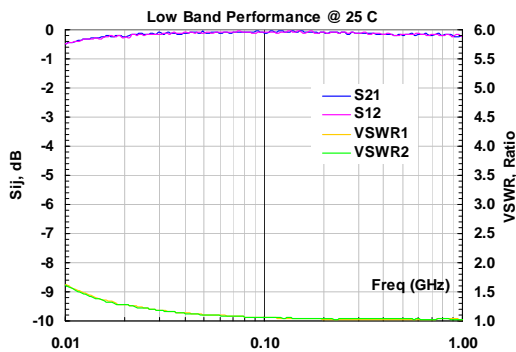
Model	WBT0040N
-------	----------

**Note: Heat sink is required for high power applications!!!**

**Specifications** (Tested at +25°C)

Item	Symbol	Test Constraints	Min	Typ	Max	Unit
Frequency Range	BW	50 Ohm Impedance	0.015		4.2	GHz
Insertion Loss	S <sub>21</sub>	0.015 – 4.2 GHz		0.3	0.8	dB
VSWR	SWR <sub>i</sub>	0.015 – 4.2 GHz		1.2:1	1.5:1	Ratio
Isolation, RF to DC port		0.015 – 4.2 GHz		45		dB
Maximum Power Handling	P <sub>MAX</sub>	0.015 – 4.2 GHz, CW			20	W
Maximum DC Voltage	V <sub>DCMAX</sub>				50	V
Maximum DC Current	I <sub>DCMAX</sub>				600	mA
Operating Temp	T <sub>o</sub>		-40		+85	°C

**Typical Performance**



**Outline**

